

Fleet Map

Simultaneously displays the current location of all vehicles selected. The icon shows the status of the vehicle and each vehicle is recognizable by the label with the name (customizable).

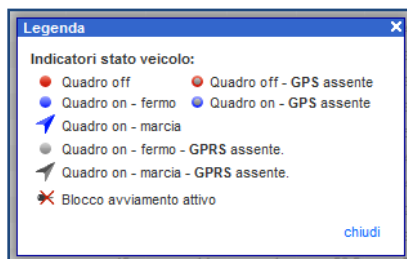
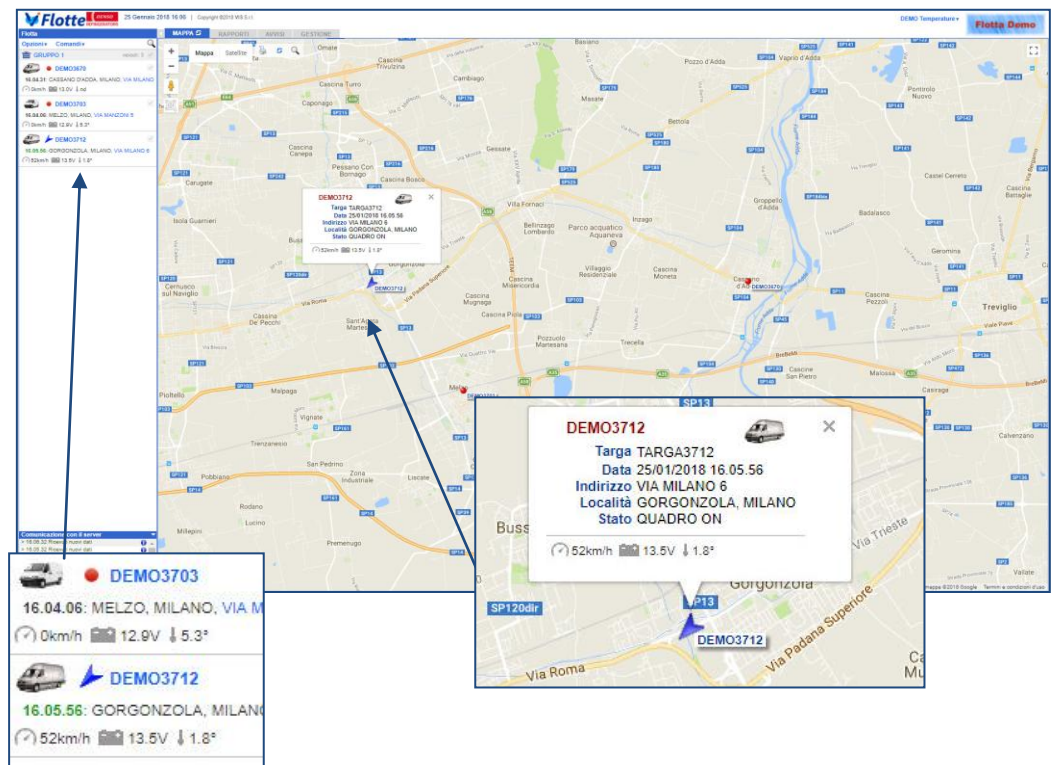


Image with exact
Model and Vehicle
Color



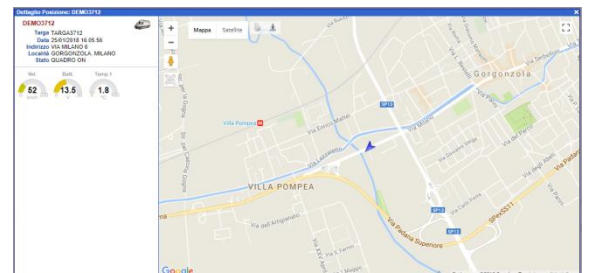
Position Detail Map with Temperature

Just clicking on an address, or directly on the icon on the map of the vehicle fleet, a PopUp window appears with the detail map and instrument panel with address, status, speed, battery level of the vehicle and **temperature detected**.

Useful to avoid "zoom" and "scroll" on the Fleet Map.

Provides the view:

- Map
- Satellite
- StreetView



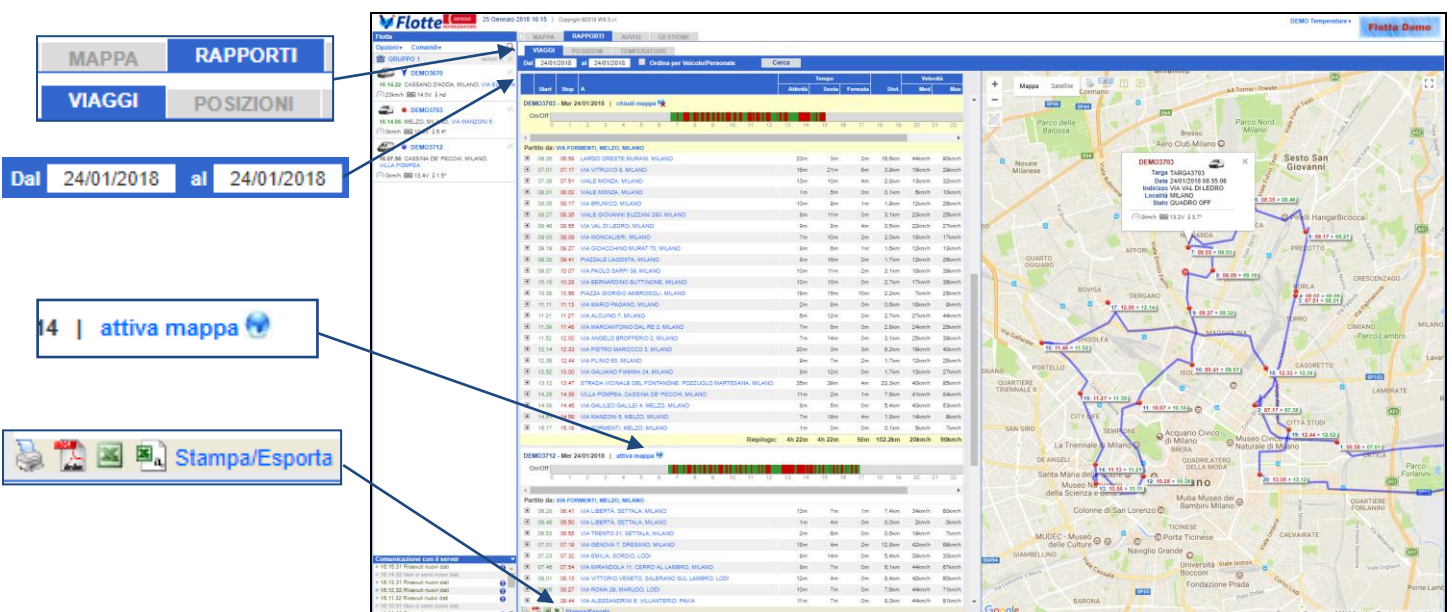
Temperature Graphs

Interactive graphs of the temperatures detected by all selected vehicles (not one at a time!) In the set date range. Scrolling the graph with the "mouse", a popup displays time and temperature detected.





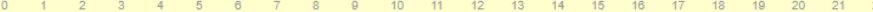
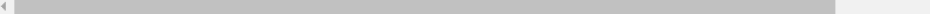



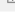









Travels Report

List of Trips made by all selected vehicles (not one at a time!) in the date range set. Selecting the link "active map" the map appears with the layout of all journeys made on the day, with evidence of stops. Data printable and exportable in various format.



Travels Report: travel vehicle summary

For each day that the vehicle has travelled displays graphics of Trip/Pause time and the list of trips made, with time departure, arrival, time travel, stop, km, average and maximum speeds.

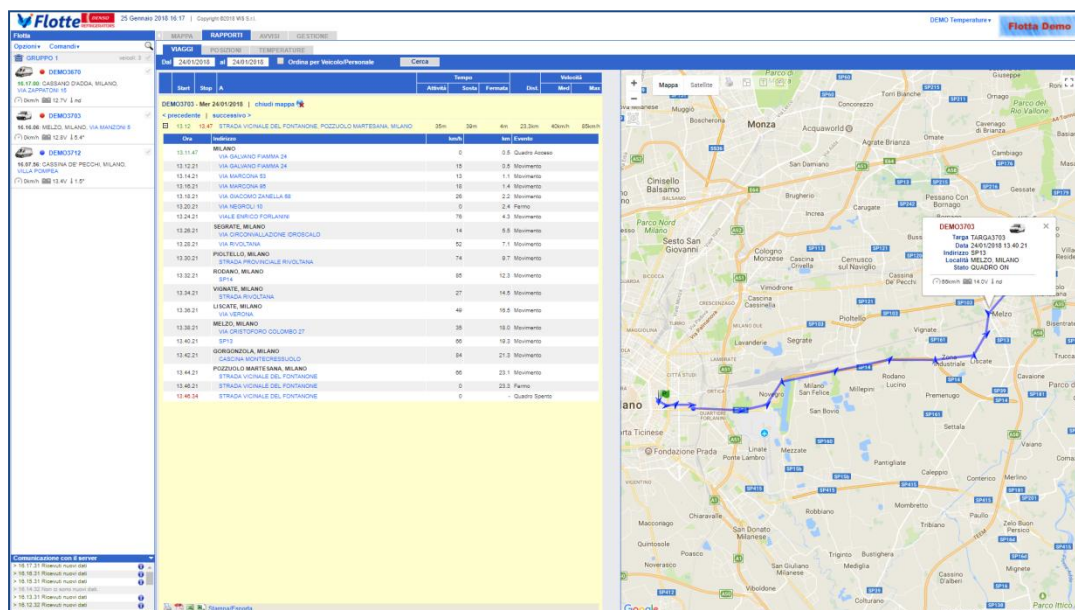
	Start	Stop	A	Tempo			Dist.	Velocità	
				Attività	Sosta	Fermata		Med	Max
DEMO3703 - Mer 24/01/2018 chiudi mappa 									
On/Off									
									
									
Partito da: VIA FORMENTI, MELZO, MILANO									
	06.35	06.58	LARGO ORESTE MURANI, MILANO	23m	3m	2m	16,6km	44km/h	90km/h
	07.01	07.17	VIA VITRUVIO 8, MILANO	16m	21m	6m	3,9km	15km/h	29km/h
	07.38	07.51	VIALE MONZA, MILANO	13m	10m	4m	2,8km	13km/h	32km/h
	08.01	08.02	VIALE MONZA, MILANO	1m	5m	0m	0,1km	5km/h	10km/h
	08.08	08.17	VIA BRUNICO, MILANO	10m	9m	1m	1,9km	12km/h	25km/h
	08.27	08.35	VIALE GIOVANNI SUZZANI 280, MILANO	8m	11m	0m	3,1km	23km/h	25km/h
	08.46	08.55	VIA VAL DI LEDRO, MILANO	9m	8m	4m	3,5km	22km/h	27km/h
	09.03	09.09	VIA MONCALIERI, MILANO	7m	10m	2m	2,0km	18km/h	17km/h
	09.19	09.27	VIA GIOACCHINO MURAT 70, MILANO	8m	6m	1m	1,6km	12km/h	13km/h
	09.32	09.41	PIAZZALE LAGOSTA, MILANO	8m	16m	2m	1,7km	12km/h	26km/h
	09.57	10.07	VIA PAOLO SARPI 39, MILANO	10m	11m	2m	3,1km	18km/h	39km/h
	10.18	10.28	VIA BERNARDINO BUTTINONE, MILANO	10m	10m	0m	2,7km	17km/h	36km/h
	10.38	10.56	PIAZZA GIORGIO AMBROSOLI, MILANO	18m	15m	10m	2,2km	7km/h	25km/h

Travels Report: Trip details with map

Selecting the "+" on the left of a trip, a Trip Detail is displayed:

Shows all positions sent by the device during the entire trip, with indication of direction, speed and cumulated distance.

Partito da: STRADA ALLA			
+	06.55	07.29	VIA
+	7.32	07.34	VIA
+	09.48	09.50	VIA



Positions Report

Setting day, start time, minutes and hours interval, appear, for all selected vehicles (not one at time!), The positions sent by the devices in the selected period, with indication of direction, speed, measured temperature and message type (Ignition On / off, moving, stationary, etc.). Selecting the link "see" in the column map, the map is activated with all positions for the selected vehicle.

The screenshot displays the Flotte web application interface. On the left, there's a sidebar with navigation tabs: MAPPA, RAPPORTI, VIAGGI, and POSIZIONI. The main area shows a table of vehicle positions for a specific date and time range. The table columns include: Data, Ora, Indirizzo, Stato, Velocità, Temperatura, and Messaggio. Below the table, there's a map showing the location of the selected vehicle. The map is a Google Map of Milan, with a blue line indicating the vehicle's path. The interface also includes a search bar and various filters.

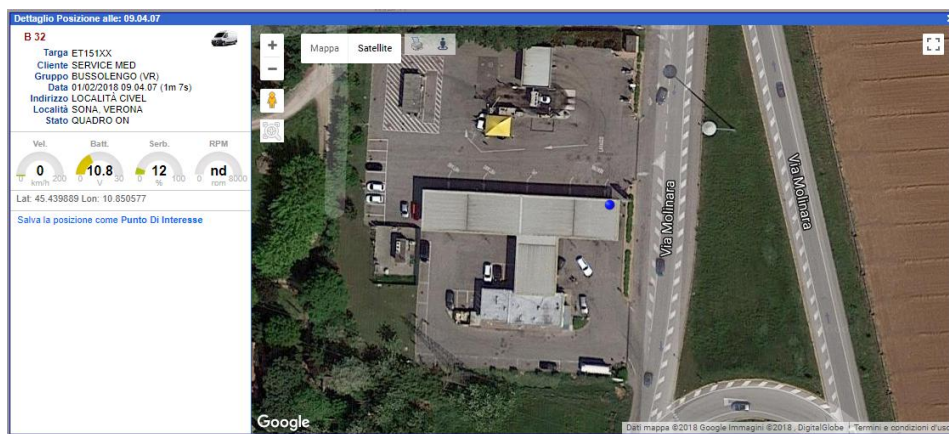
Management from Tablet or SmartPhone

This block contains several screenshots of the Flotte mobile application interface. The top row shows four different views: a list of vehicles, a map view, a detailed view of a specific vehicle's path, and a street view. The bottom row shows three more views: a list of vehicles with filters, a map view with a route, and a settings screen. The interface is designed for easy navigation on mobile devices, with large buttons and clear text.

Refuels / Subtraction Report

ATTIVITÀ	VIAGGI	CONTATTI	EVENTI	POSIZIONI	MESE	CARBURANTE
Da << Giugno 2011 >> a << Luglio 2011 >> Cerca						Lista Serbatoio
Nome	Data	Ora	Località	Indirizzo	Litri	
FMS-CAN1	03/06/2011	10.01	COLLEGNO, TORINO	VIA MARTIRI 30 APRILE	66.0	
	03/06/2011	18.19	COLLEGNO, TORINO	VIA ROMEO MEINARDI	-10.5	
	07/06/2011	19.20	ORBASSANO, TORINO	VIA CIRCONVALLAZIONE	-15.0	
	08/06/2011	09.01	ORBASSANO, TORINO	VIA CIRCONVALLAZIONE	14.3	
	09/06/2011	08.38	RIVALTA DI TORINO, TORINO	VIA GIAVENO	66.8	
	14/06/2011	12.59	PINEROLO, TORINO	VIA SALUZZO	18.0	
	20/06/2011	11.11	GIAVENO, TORINO	BORGATA VIRETTA	-16.5	
	20/06/2011	11.22	GIAVENO, TORINO	BORGATA CHIARMETTA	15.0	
	20/06/2011	11.31	GIAVENO, TORINO	BORGATA BARONERA	10.5	
	21/06/2011	08.48	RIVALTA DI TORINO, TORINO	VIA GIAVENO	63.8	
	24/06/2011	09.56	BRICHERASIO, TORINO	STRADALE PINEROLO	66.8	
	29/06/2011	09.24	GIAVENO, TORINO	VIA TORINO	54.0	

Refuel / Subtraction Position



Tank Graph

For each day that the vehicle has traveled it is displayed graphic TRAVEL / STOP of the day and the graph of tank level



Other Accessories (optionals)

Additional modules and optional accessories are available to customize the service profile according to your needs. The complete list of available options can be found on the page:

www.visinnova.com